

# DSS Professional

Highly Available Security System for Enterprises

A person is shown from the side, sitting at a desk with two computer monitors. The person is holding a smartphone to their ear with their right hand. The left monitor displays a complex interface with various panels and data. The right monitor displays a grid of seven colored squares (blue, red, teal, grey, blue, green, and blue) with abstract white shapes inside them. The scene is dimly lit, with the primary light source being the screens.

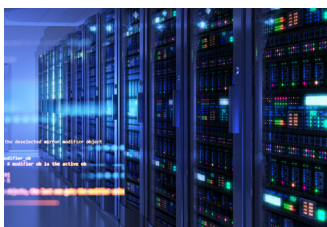
V8.7.0

## ■ Introduction

Dahua Security System (DSS) Professional is designed for centralized security management. Relying on powerful hardware performance, it provides centralized video monitoring, access control, video intercom, alarm management, and POS records search. Also, it can help you improve your security management efficiency with the help of artificial intelligence technologies such as face recognition, license plate recognition, and video metadata.

Whether you are a small business with a few cameras, or a global business with over 20,000 cameras, DSS Professional is the right solution for you. Even if your needs change in the future, you can easily scale, upgrade or add functionalities to DSS Professional so that your needs are met. Build your security management system on a solid foundation with DSS Professional.

## ■ Features



### ***Scalable Design, Easy to Grow***

With distributed deployment, you can easily expand the supported channels to 20,000 and central storage capacity to 4 PB. The multi-site function allows you to incorporate multiple DSS platforms into one, and conveniently show their information on one PC client. You can access live and recorded videos, real-time and historical events, and more.



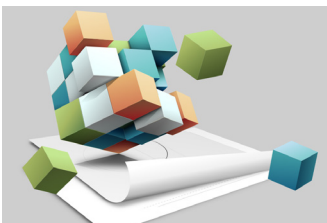
### ***AI-Powered Applications, Proactive Security***

DSS Professional integrates various AI capabilities that devices have, such as face recognition, automatic number plate recognition, and video metadata. You will be notified immediately when the target you are interested in appears, allowing you or security personnel to take necessary security measures.



### ***Highly Available Technology, More Stable***

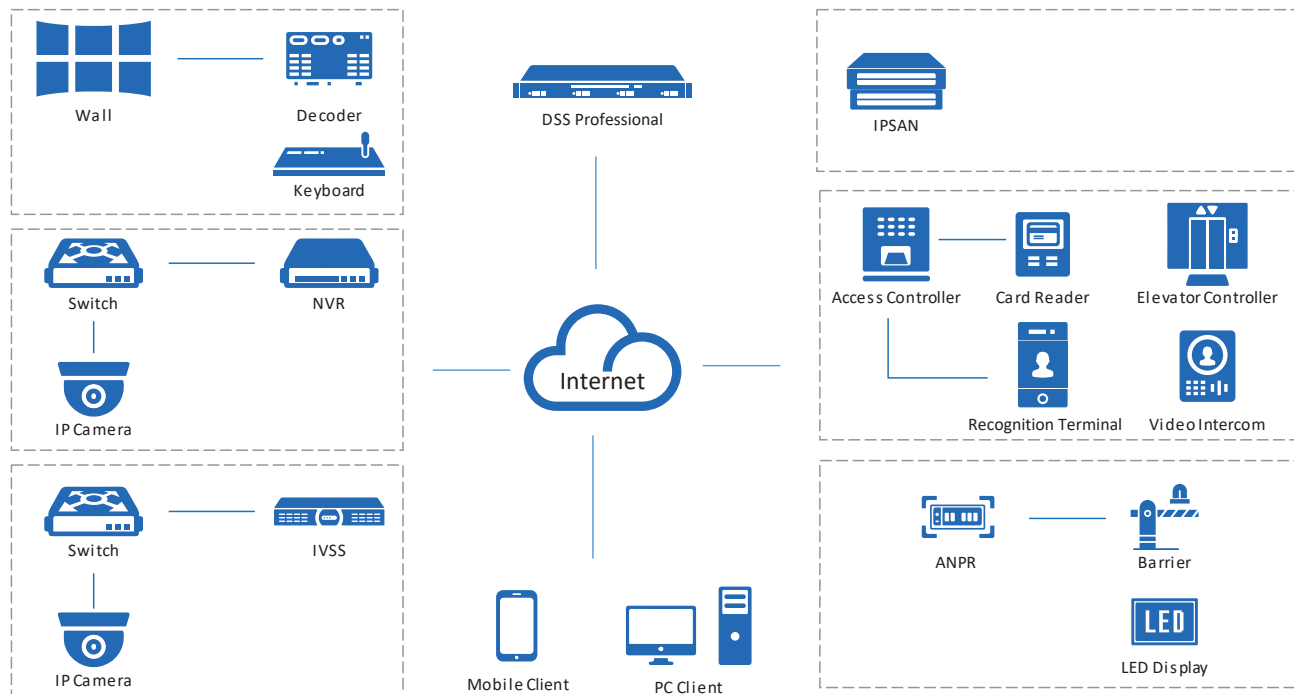
With hot standby and N+M redundancy, DSS Professional ensures that your business will not be interrupted by failed servers.



### ***Customized Services, Enhanced Competitiveness***

We offer services for you to build DSS Professional into your own platform, allowing it to fully suit your needs and give you a competitive edge in the market.

## ■ System Architecture



## ■ Main Functions

### **Monitoring Center**

#### ◆ **Live View**

With its ease to use live view, you can both customize and control how you view videos in real time. The layout can also be configured to display videos in different sizes, enabling you to give priority to important areas by placing them in larger windows.

You can also remotely control certain devices to perform various actions such as talking to people through the camera, perform IP speaker operations such as talking, broadcasting, playing audio, and adjusting the volume, view dewarped live view of a fisheye camera, and unlocking the barrier of a turnstile to grant access to people.

The visual tracking function allows you to follow a target across different areas or locations, without losing sight of the target, as long as the places that the target passes through are covered by the associated cameras.

If an emergency occurs, manual recording is just a click away, so that you can quickly save that particular part of the video for evidence.

#### ◆ **Playback**

The playback function allows you to play recorded videos stored on the server and devices in multiple windows. To help you efficiently wade through tons of videos, you can play them 64X faster than the normal speed to skip parts that you are not interested in, slow them down to 1/64X to focus on important sections, or play the previous or next video clip of the most recent time to track the event easily.

To control the data in the videos, you can add tags to mark relevant content, and you can even lock them to prevent them from being overwritten when the disk space is full. The filter function can also be very helpful when you only need to deal with a specific type of video, or a type of target that appeared in one or more areas.



### ◆ Video Wall

Video wall is used to display videos on a large screen that consists of many smaller screens. Highly customizable, you can not only configure the layout of the video wall, but you can also display recorded videos and real-time videos to zero in on important details in the video. With the task function, you can schedule videos from different channels to be displayed on the video wall at specified times or in a loop.

### ◆ Map

The map is a very useful function that allows you to keep track of devices and events through their location information. With it, you can mark a device and immediately know the location of an event when the device triggers an alarm and flashes red on the map. You can also add submaps to different areas. For example, a plan view of a public square can be added to a map to reveal the exact location of people who are inside the public square.

### ◆ Group Talk

The real-time locations of mobile devices are shown on the map, making it easy for dispatchers to effectively send officers and resources to address issues such as a burglar or duress alarm going off in a building. Dispatchers can start a group talk and engage in a real-time conversation with the officers who were assigned the task to efficiently guide them through the process.

### ◆ AR

Empowered by AI overlay and effortless target tracking, the AR function helps elevate your monitoring capabilities by not only providing panoramic view, but simplifying the task of tagging targets on the video image based on our user-friendly tag templates. You can experience unmatched convenience of efficiently categorizing surveillance targets, including critical locations like hospitals and road junctions, and also customize your preferences, such as

## DeepXplore

---

Powered by AI technology, you can easily search for targets, look for records on them, and even generate tracks on their movement to observe their whereabouts through setting simple search conditions. To gain an overview on the target, you can organize information on them into a case and generate a report.

## Event Management

---

You can monitor and process over 200 types of alarms right from the event center, while it continuously generates statistics. To give you a clear picture of what is happening in your area, the alarm center also displays a variety of useful information such as the number of alarms that were processed, and the type of alarms that are triggered most frequently. Highly flexible, you also have a selection of predefined alarm types available to you, and the option to not only create your own alarm, but to also manually trigger it to take snapshots and send emails for important events.

## Maintenance Center

---

By just visiting one page, you can stay up to date with information on alerts, devices, servers and more to instantly recognize issues such as offline devices and abnormal servers. In the maintenance center, switches can also be conveniently configured and details, such as their network topology, can also be viewed. Scheduled reports are also sent based on the information collected to give you a full picture of how your system is running. Updating is also a breeze, as you can easily update multiple devices in batches when new versions are available.

### **Access Management**

---

#### ◆ **Access Control**

Doors and lifts in different zones can all be effectively controlled for added security. A zone-based management model is used, which maintains maps for each zone to make it easy for you to locate access points. Through the use of access rules, you can quickly grant and deny access to people with great efficiency, strengthening the security of each zone. From the access panel, you can also view and control the channels of doors and lifts at the same time across different zones to manage access.

#### ◆ **Video Intercom**

All video intercom devices can be managed directly through one easy-to-use interface that offers two-way communication and remote access control. Through the interface, you can secure access to your premises, and receive calls and emergency reports directly from people on-site. Building management is also very convenient, as you can send group notices to all the indoor monitors, keeping people informed of important events, such as scheduled power outages.

#### ◆ **Visitor**

DSS Professional offers a complete process to manage visitors, including appointment, registration, access permission authorization, and ending visit with all permissions canceled. A complete, detailed record of all visits is available for your review at any time.

### **Intelligent Analysis**

---

To help build your profits and strengthen your services, the platform provides invaluable information on people on your premises through performing a variety of intelligent analysis and generating heat maps. Through it, you can know the number of people in an area at any given time, where they frequent the most, and precisely when the highest peaks in numbers occurs.

### **Parking Lot Management**

---

From just one platform, you can remotely manage all the devices in your parking lots, such as parking space detectors and ANPR devices, to guide vehicles in an orderly fashion. The visualization function makes it easier for you to drag and drop devices on the visual map of your parking lots.

The platform also offers a vehicle search system for vehicle owners to use when they are leaving, and the fuzzy search function allows you to quickly and accurately locate vehicles even with limited information, making it easier than ever to find what you're looking for.

The platform supports scenes without barriers to ensure smooth navigation for drivers, and it helps keep your parking occupancy information up-to-date with the function of resetting available parking spaces. Insightful information is also provided in the form of statistics, which supports automatic export of parking lot reports and improved statistics of entry and exit data, on an easy-to-use dashboard, keeping you up to date on key activities taking place in your parking lots to help you effectively manage them.

## Intelligent Inspection

Both your properties and equipment are effectively monitored through our user friendly platform. The settings can even be customized to meet your particular needs for item inspection. Inspection plans can also be scheduled to capture images and monitor temperatures with HD cameras and temperature imaging technology, to help you quickly identify equipment failures and safety hazards when detected. This type of intelligent inspection greatly improves upon manual methods, increasing the accuracy and efficiency of inspection, while reducing labor cost.

## Synthesis

DSS Professional is friendly with other systems in your infrastructure. By developing bridges, linkage actions can be flexibly configured on DSS Professional based on the events that are triggered on other platforms. Also, the platform can send device status and events to third-party systems through BACnet, SNMP, Modbus, and SIA protocols.

Access control records can be synchronized with the databases of other platforms. For added convenience, the devices, people, and vehicle information on third-party platforms can be seamlessly synchronized with DSS Professional to aid in opening and closing doors, and performing other functions.

## System Requirements

	Server		PC Client	
	Recommended	Minimum	Recommended	Minimum
CPU	Intel Xeon Silver 4310@ 2.1 GHz 12 Core Processor	Intel Xeon E-2334 3.4 GHz, 8M cache	Intel® Core i7-11700 @2.50 GHz	Intel® Core i5-9500 @3.00 GHz
Memory	32 GB	16 GB	16 GB	
System Disk	7200 RPM Enterprise Class HDD 1 TB		-	
Storage Disk	7200 RPM Enterprise Class HDD 1 TB, 500 GB free space for DSS		200 GB free space for DSS Client	100 GB free space for DSS Client
Graphics Card	-		NVIDIA® GeForce® RTX 3060	Intel® UHD Graphics 630
Ethernet Port	4 Ports@1000 Mbps	2 Ports@1000 Mbps	1000 Mbps	
Operating System	Microsoft® Windows 10 20H2 Pro (64-bit) Microsoft® Windows 11 21H2 Pro (64-bit) Microsoft® Windows 11 24H2 Pro (64-bit) Microsoft® Windows Server 2019 Standard (64-bit) Microsoft® Windows Server 2022 Standard (64-bit) Microsoft® Windows Server 2025 Standard (64-bit) VMware®ESXi™ 7.x Microsoft® Hyper-V with Windows Server 2019		Microsoft® Windows 10 20H2 Pro (64-bit) Microsoft® Windows 11 21H2 Pro (64-bit) Microsoft® Windows 11 24H2 Pro (64-bit) Microsoft® Windows Server 2019 Standard (64-bit) Microsoft® Windows Server 2022 Standard (64-bit) Microsoft® Windows Server 2025 Standard (64-bit) VMware®ESXi™ 7.x Microsoft® Hyper-V with Windows Server 2019	
Languages	Arabic, Bulgarian, Czech, Danish, English (United States), Finnish, French, German, Hebrew, Hungarian, Italian, Japanese, Korean, Macedonian, Polish, Brazilian Portuguese, Russian, Simplified Chinese, Spanish, Thai, Traditional Chinese, Turkish, Ukrainian, Vietnamese			

- ① We recommend that you install an operating system on a physical server and directly deploy the DSS platform on the server to achieve optimal and reliable performance. If you have to deploy the DSS platform on a virtual server, please see the deployment manual for more instructions.
- ② The platform supports using a maximum of 2 network cards at the same time. You can either use 1 network card for accessing devices on a local area network, and 1 network card for services on the Internet; or use both network cards for accessing devices on a local area network, and then map one of them to the Internet.

## ■ Performance Specification

Organization, Role and User	
Organizations	10 levels; 999 organizations in total
Roles (User Permission)	500
Users	2,500
Online Users (PC, Agile App, and CC Agile App)	200
Roles per User	32
DSS Agile VDP Users	500 online users and 5,000 total users
User Groups	20
Users per User Group	500

Recording Plan	
General Recording Plans	3,000
Motion Detection Recording Plans	3,000
Video Retrieval Plans	3,000
File Retrieval Plans	3,000

Live View and Playback	
Total Public View Folders	999
Total Public Views	1,000
Tours per User	20

Event	
Event Sources for Event Rules	3,000
Combined Event Rules	100
Combined Events	1,000
Generic Event Rules	500

Map	
Hierarchies	8
Size of Offline GIS Map Package	1 GB
Raster Maps	256
Maximum Size of Raster Map	15 MB
Raster Map Resolution	8,100 × 8,100

Resources on GIS Map	300 (after merging) 20,000 (before merging)
Resources per Raster Map	300 (after merging) 2,000 (before merging)
Static Visual Range	1,000 channels

### Group Talk

Groups	200
Users per Group	200
Concurrent Calls	200
Users Online at the Same Time	200
Users for Group Talk	10,000

### Person and Vehicle Management

Person and Vehicle Groups	999
Group Levels	10
Total Persons	300,000
Persons on the DSS Platform	300,000
Persons from Third-party Systems	30,000
Person Groups that a Person can Belong to	20
Cards	600,000
Faces	300,000
Palm Veins	600,000
Fingerprints	600,000
Vehicles	50,000

### Face and Vehicle Arming Lists<sup>①</sup>

Total Faces	300,000
Face Arming Lists	50
Face Comparison Databases (General Arming Database)	50
Face Comparison Databases (Mobile Arming Database)	50
Faces per General Face Comparison Database	50,000
Faces per Mobile Face Comparison Database	10,000
People in Total Face Comparison Groups (Mobile and General Arming Databases)	300,000
Total Vehicle Arming Groups (Mobile and General Arming Databases)	50
Total Vehicle Arming Groups (General Arming Database)	50
Total Vehicle Arming Groups (Mobile Arming Databases)	50
Vehicles per General Vehicle Arming Group	50,000
Vehicles per Mobile Vehicle Arming Group	10,000



## Access Control

Zones	999
Zone Levels	10
Access Rules (Doors and Lifts)	500
Persons for Access Rules (Doors and Lifts)	100,000
Persons for Door Access Rules	100,000 (1 password, 2 face images, 3 fingerprints, 2 palm veins, and 5 cards for each person)
Door Access Rules	500
Persons for Lift Access Rules	100,000
Lift Access Rules	300
Global Anti-passback Rules	16
Anti-passback Groups per Global Anti-passback Rule	2–4
Card Readers per Anti-passback Group for Global Anti-passback Rule (by Route)	64
Card Readers per Anti-passback Group for Global Anti-passback Rule (by Area)	64
Global Interlock Rules	16
Door Access Points per Group for the Rule of Global Interlock within Groups	2–4
Interlock Groups for the Rule of Global Interlock between Groups	2
Doors per Interlock Group for the Rule of Global Interlock between Groups	1–4
Total Public Passwords	1,500
Public Passwords per Device	500
Scheduled Verification Plans	64

## Visitor

Appointments in Progress	50,000
Visitor Permission Groups	50

## Video Intercom

Rooms	5,000
Persons per Room	20
VDP Accounts per Room	20

## Intelligent Analysis

People Counting Groups	30
People Counting Rules per Group	20
Channels for Extracting People Counting Data at a Time	100
Metadata Statistics Channels Searched at a Time	200
Crowd Distribution Statistics Groups	30
Rules per Crowd Distribution Statistics Group	20
Channels for Extracting Crowd Distribution Data at a Time	100
Vehicle Density Statistics Groups	30
Rules per Vehicle Density Distribution Statistics Group	20
Channels for Extracting Vehicle Density Data at a Time	100

## Parking Lot Management

Parking Lot Organization Levels	10
Total Parking Lot Organizations	999
Vehicles	50,000
Vehicle Groups	512
Vehicle Groups per Parking Lot	50
Main Parking Lots	16
<b>Sub Parking Lots per Main Parking Lot</b>	16
Entrances	128
Exits	128
Total Entrance/Exit Points	128
Total Entrances and Exits	128
Parking Space Categories (Unclassified Excluded)	5
Parking Spaces per Category (Unclassified Excluded)	1,000
Total Reserved Parking Spaces	10,000
Total Reserved Parking Space Groups	3,000
Parking Spaces per Reserved Parking Space Group	1,000
License Plates per Reserved Parking Space Group	1,000
Reserved Parking Space Groups per Parking Lot	3,000
Parking Space Detectors per Parking Lot	500
Parking Spaces per Parking Lot	1,500
Parking Space Available Displays per Parking Lot	30
Image Size per Layer	15 MB

Resolution per Layer	8,100 × 8,100
Total Layers	128
Layers per Parking Lot	16
Resources per Layer (parking spaces not included)	600
Parking Spaces per Layer	1,000
Vehicle Search Rules	32
Vehicle Search Point Links per Vehicle Search Rule	32
Parking Overtime Rules	128
Rules for Sending Scheduled Reports	32

### Maintenance Center

Alert Rules	3,000
SNMP Protocol Manufacturers	5

### Synthesis

Event Synchronization Projects	5
Incoming Triggered Event Types per Event Synchronization Project	300
System Integration Projects	5
Event Types per System Integration Project	300
Total Trigger Out Event Sources	3,000
SNMP Event Sources	3,000
Total BACnet Event Sources (Sum of Event Sources for Each Object)	3,000
Total BACnet Objects	3,000
Event Sources per BACnet Object	3,000
Total Modbus Event Sources	3,000

### AR

Tag Templates	50
Tags per AR Channel	50
Live Video Channels Bound to a Single Tag	5
Recorded Video Channels Bound to a Single Tag	5
Locally Uploaded Images per Tag	5
Linked Channels per Tag	16

### Notification Center

Messages	1,000
----------	-------

### Quick Commands

Quick Commands per User	20
Commands per Quick Command	20

### IP Speaker

Broadcasting Channels	256
Customized IP Speaker Groups	20

### Intelligent Inspection (plug-in)

Inspection Organizations	999
Levels of Inspection Organizations	10
Inspection Objects	10,000
Inspection Points	10,000
Inspection Objects per Organization	1,000
Inspection Plans	1,000
Inspection Points per Inspection Plan	100
Execution Time Points per Inspection Plan	24

### Retail (plug-in)

Persons	50,000
Total Areas	100
Total Stores	500
Floors Supported by a Single Store	B2–F8 (10 floors)
People Counting Regions Supported by All Stores	1,000
People Counting Regions Supported by a Single Store	10
Rules of Sending Scheduled Reports	32

### Education (plug-in)

Total Attendance Groups	1,000
People Supported by All Attendance Groups	50,000
People Supported by a Single Attendance Group	2,000
Total Classrooms	1,000

Face Recognition Channels Linked to a Single Classroom	5
Total Courses	5,000
Total Course Templates	50
People can be Selected per Class Scheduling	2,000
People Already Scheduled with Classes per Classroom	10,000
People Having Classes at the Same Time (Single Server)	4,000
People Having Classes at the Same Time (Multi-Servers)	40,000
Total Campus Attendance Points	64
Total Campus Attendance Rules	50

### Data Storage

Total Database Records	100,000,000
Event Records	20,000,000
Face Recognition Records	20,000,000
ANPR Records	20,000,000
Metadata Records	20,000,000
Access Records	20,000,000
Analysis Records for People Enter and Exit	5,000,000
Video Intercom Records	20,000,000
Group Talk Records	20,000,000
Historical Count Records	20,000,000
In Area Statistical Records	20,000,000
<b>Heat Map Records</b>	5,000,000
Hourly/Daily/Monthly Face Statistics	20,000,000
Hourly/Daily/Monthly Human Body Statistics	20,000,000
Hourly/Daily/Monthly Motor Vehicle Statistics	20,000,000
Hourly/Daily/Monthly Non-motor Vehicle Statistics	20,000,000
Visitor Records	20,000,000
Vehicle Enter Records	20,000,000
Vehicle Exit Records	20,000,000
People Entering and Exiting Records	5,000,000
Parking Records	20,000,000
Vehicle Forced Exit Records	20,000,000
Vehicle Parking Duration Records	20,000,000

Parking Duration Records of Parking Space	20,000,000
Mobile Device Records	20,000,000
Operator Logs	20,000,000
POS Records	20,000,000
POS Event Records	20,000,000
Maintenance Alert Records	20,000,000
Maintenance Fault Records	5,000,000
Plug-in Logs	20,000,000
Service Logs	20,000,000

### Data Storage-Independent Data Deployment

Video Metadata Records	30,000,000
Event Records	30,000,000
Face Recognition Records	30,000,000
ANPR Records	30,000,000

### Data Storage-Intelligent Inspection Plug-in

Inspection Records	20,000,000
Inspection Point Records	20,000,000

### Data Storage-Retail Plug-in

Accurate People Flow	5,000,000
General People Flow	5,000,000
Queue Analysis	5,000,000
People Flow Analysis in Region	5,000,000
Analysis of Heat in Region	5,000,000
General Customer Portrait	5,000,000
Accurate Customer Portrait	5,000,000

### Data Storage-Education Plug-in

Class Attendance Records	20,000,000
School Attendance Records	20,000,000



## ■ Server Specification

The following specifications are obtained in servers with recommended system requirements.

Parameter		Single Server	Multiple Servers
Sub Servers per System	Sub Servers	-	10 servers
Total Devices	Devices <sup>②</sup>	2,000 devices	20,000 devices
	Auto-registered Devices	1,000 devices	10,000 devices
Video Devices and Channels	Video Devices and Channels <sup>③</sup>	1,000 devices; 2,000 channels	10,000 devices; 20,000 channels
	Devices Added by Hikvision Protocol	500 devices; 2,000 channels	5,000 devices; 20,000 channels
	P2P Devices	32 devices	
	Devices Added by ONVIF Protocol	1,000 devices; 2,000 channels	10,000 devices; 20,000 channels
	ANPR Channels	500 channels (128 channels for entrance)	5,000 channels (128 channels for entrance)
	Face Recognition Devices and Channels	100 devices; 500 channels	1,000 devices; 5,000 channels
	Video Metadata Channels	500 channels	5,000 channels
	MPT Devices	100 devices; 100 channels	300 devices; 300 channels
	EEC Devices	32 devices	
	MDVR/MNVR	100 devices; 800 channels	1,000 devices; 8,000 channels
	Devices Accessed via RTSP	1,000 devices; 2,000 channels	10,000 devices; 20,000 channels
Access Control Devices	Access Control Devices and Lift Control Devices	500 devices; 1,000 channels	1,500 devices; 3,000 channels
	Total Access Control Devices	500 devices; 1,000 doors	1,500 devices; 3,000 doors
	Access Control Devices on the DSS Platform	500 devices; 1,000 doors	1,500 devices; 3,000 doors
	Access Control Devices from Third-party Systems	500 devices; 1,000 doors	1,500 devices; 3,000 doors
	Lift Control Devices	500 devices; 1,000 channels	1,500 devices; 3,000 channels
	Visitor Terminals	32 devices	
VDP Devices	Video Intercom Devices	2,000 devices	
Alarm Devices	Alarm Controllers	1,000 devices; 10,000 zones	5,000 devices; 10,000 zones
	Emergency Phone Towers	1,000 devices; 2,000 channels	10,000 devices; 20,000 channels
	EAS Alarm Channels	1,000 channels	10,000 channels
Security Screening Devices	Security Screening Machines	20 devices	200 devices
	Walk-through Metal Detectors	60 devices	600 devices
Radars	Radars	20 devices	
Parking Lot Devices	Parking Space Detectors	500 devices; 1,500 parking spaces	2,000 devices; 6,000 parking spaces
	Parking Space Available Displays	150 displays	600 displays
Intelligent Analysis	People Counting Channels	100 channels	300 channels
	Heat Map Channels	100 channels	300 channels
IP Speaker	IP Speakers (ONVIF)	1,000 devices	10,000 devices

<b>Multi-site</b>	Sites	100 sites	
	Total Devices	10,000 devices; 20,000 channels	
<b>Network Devices</b>	Switches	200 devices	500 devices
<b>Others</b>	POS Channels	100 channels	300 channels
<b>Media Transmission Server</b>	Total Incoming Bandwidth	600 Mbps	6,000 Mbps
	Incoming Video Bandwidth	600 Mbps	6,000 Mbps
	Incoming Picture Bandwidth	200 Mbps	2,000 Mbps
	Total Outgoing Bandwidth	600 Mbps	6,000 Mbps
	Outgoing Video Bandwidth	600 Mbps	6,000 Mbps
	Outgoing Picture Bandwidth	200 Mbps	2,000 Mbps
	Total Storage Bandwidth	600 Mbps	6,000 Mbps
	Video Storage Bandwidth	600 Mbps	6,000 Mbps
	Picture Storage Bandwidth	200 Mbps	2,000 Mbps
	Prerecording Bandwidth for Alarm Recordings	400 Mbps	4,000 Mbps
<b>Central Storage</b>	Central Storage Position	Local Server and IP SAN	-
	Maximum Capacity per Storage Server	400 TB	4 PB
<b>Event<sup>④</sup></b>	Total Events <sup>⑤</sup>	300 per second	600 per second
	Storage of Events or Alarms without Pictures <sup>⑥</sup>	300 per second	600 per second
	Alarms with Snapshots (Stored on Devices)	300 per second	600 per second
	Access Control Events	300 per second	600 per second
	Combined Events	100 per second	
<b>Third-party Integration</b>	Concurrent SNMP Protocol Push Events	50 per second	
	Concurrent Access Control Commands of Third-party System	15 per second	

① A face can belong to multiple face database. All the devices together cannot contain more than 10 million faces when the number of faces in the arming lists are multiplied by the number of devices. For example, if a face arming list with 200,000 faces is sent to 40 devices, you can only send another face arming list with 100,000 faces to 20 devices. Or, you can send a list with 50,000 faces to 20 devices and another list with 100,000 faces to 10 devices.

② The maximum number of devices that the platform supports, including IPC, NVR, and ITC.

③ When adding video channels and video devices, such as IPC, NVR and ITC, to the platform, the maximum number of devices and channels that the platform supports.

④ These values represent the maximum number of events that can be triggered at the same time. The numbers are measured based on the peak concurrency tests that were carried out 3 times a day. Each test lasted 20 minutes, with 30% of the peak concurrency being applied to the remaining day.

⑤ The maximum number of events that can be triggered at the same time largely depends on the concurrent write capability of the database.

⑥ For events with snapshots, you must take into account the ability for disks and servers to concurrently write images at the same time.

## ■ DSS Mobile Client Main Functions

### ***DSS Agile 8***

---

#### ◆ ***Live View***

Even when you are away from your computer, you can also ensure the safety of your area right on DSS Agile. You can watch the real-time videos remotely from up to 16 channels at the same time with 3 stream types for you to choose according to the status of your mobile network. PTZ control is also supported so that you can cover most of the area. When anything of interest happens, you can take snapshots or recordings as evidence that stores on your phone, or send a voice message to deter unwanted activities.

#### ◆ ***Playback***

Videos stored on devices or the server can both be played up to 8X faster or 1/8X slower on DSS Agile. You can also use the manual recording function to record important content and save it to your phone.

#### ◆ ***Visitor Management***

You can create visitor pass and grant access permissions for visitors, and effortlessly keep tabs on visitors' status, from visit information to end of the visit. Automatic visit and automatic leave can be set for unrivaled convenience.

#### ◆ ***Access Control***

With DSS Agile, you can remotely monitor and operate all access control devices. For example, you can open a door for someone who has a proven identity, or set a door to be always closed so that no one can access.

#### ◆ ***Target Tracking***

For suspicious activities, you can locate targets directly in DSS Agile by searching for face recognition records from a period, uploading a face image of a specific target, or searching for capture records of people, non-motor vehicles, and motor vehicles by features.

#### ◆ ***Event***

You can receive and process various types of alarms. You can also receive alarms when DSS Agile is not running with a subscription button.

#### ◆ ***Video Intercom***

You can make calls to and receive calls from main stations, indoor monitors and door stations. After subscribing to offline calls, you will still receive calls even when the App is not running. Also, a complete record of incoming and outgoing calls ensure that you will not miss any important message.

#### ◆ ***Alarm Control Panel***

Alarm controllers can be remotely operated through DSS Agile to protect areas. You can arm and disarm areas, bypass and isolate zones, display the status of areas and zones in real-time, and filter the status of areas and zones to display information you are specifically interested in.

### ◆ File Management

Snapshots and videos stored on devices or the server can be managed by deleting them, exporting them to albums, and more. Video downloads can be automatically and manually paused, saving you time from redownloading them when there are connection issues.

## DSS Agile VDP

### ◆ Visitor Management

You can easily manage visitors by registering their information and generating visitor passes with necessary access permissions. When they arrive, they can use the passes to gain access to where you are. DSS Agile VDP will log when visitors begin and end their visits.

### ◆ Intercom Monitoring

When guests arrive, they can call you on the door station or you can verify their identities through the live video. After confirming they are who you are expecting, you can remotely open the door for them directly on DSS Agile VDP. If you spot any unwanted activities, tap and call the management center to report an emergency.

### ◆ Message Center

The unlock records and alarm messages on the indoor monitor are fully accessible on DSS Agile VDP, allowing you to identify potential threats and ensure the safety of your residence.

## ■ DSS Mobile Client Requirements

	iOS	Android
<b>Model</b>	iPhone 5S or later	-
<b>RAM</b>	-	2 GB or more
<b>Resolution</b>	-	1280 × 720 or higher
<b>Operating System</b>	iOS 12.0 or later	Android 8.0 or later
<b>Language</b>	Arabic, Bulgaria, Czechish, English (United States), French, Japanese, Korean, Latin American Spanish, Poland, Portugal, Russian, Simplified Chinese, Spanish, Traditional Chinese, Turkish, Ukrainian, Vietnamese	